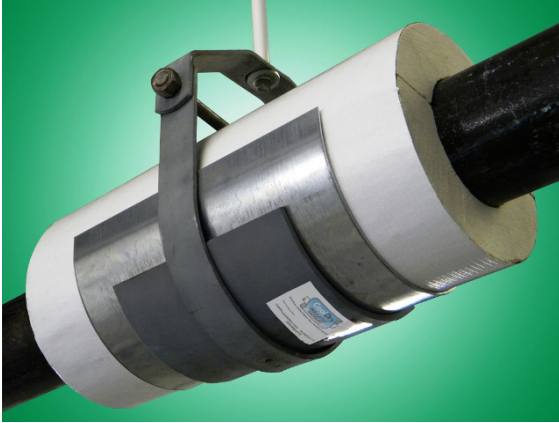




# CoolDry™ Heavy Duty Insulated Saddles

## Premium Insulated Saddles for Chilled Water Piping Systems



### Description

The CoolDry™ Heavy Duty Saddle design is for dynamic chilled water and cold piping systems where excessive movement due to expansion and contraction create point loading concerns. It is recommended for roller hanger, trapeze and strut systems. It can be used outdoors if it is protected from the weather. The Saddles meet **MSS SP-58, Type 40 Shield** criteria.

### Guide Specification

Download our engineer efficient CoolDry Heavy Duty Insulated Saddles guide specifications located on our [www.cooldrysaddles.com](http://www.cooldrysaddles.com) website.

### Features and Benefits

- A complete composite assembly, for fast and easy installation.
- 360° of rigid phenolic foam 3.75 PCF to 10" IPS and 5 PCF for piping 11" to 30"IPS provides excellent thermal efficiency and compressive strength.
- Phenolic Foam Insulation and facing each meet 25-50 Flame/Smoke ratings per ASTM E-84 on a component basis, which makes the product ideal for piping running through air plenums, or projects demanding the 25-50 Flame/Smoke rating throughout the building.
- ASTM E-96, procedure A rated Zero-Perm puncture resistant glossy white vapor retarder for superior condensation control.
- Pipe Insulation and premium glossy white Zero perm vapor retardant jacketing do not contribute to mold, mildew, bacteria or fungus problems.
- A Buckaroos 180° heavy duty G-90 galvanized carbon steel Saddle for maximum insulation system protection at the support locations.
- For 6" IPS and greater, the heavy-duty Saddle is reinforced with a ¼" thick structural A-36 grade steel load bearing plate to reduce point loading on roller, trapeze hangers and strut support locations. The ¼" steel plate is protected with a high zinc galvanized coating.
- Each unit has a genuine "Quick-Inspect" CoolDry sticker applied at the bottom of each saddle for easy jobsite engineer or inspector identification after application.

### Applications

The CoolDry™ Heavy Duty Insulated Saddle is for use on piping 3" IPS and greater on roller, trapeze or strut hangers. The product is ideal for refrigeration lines, chilled water lines, cold-process piping and thermal-cyclic systems where control of condensation is critical. The product can also be used for hot piping up to 250°F, on domestic hot water and low-pressure steam lines. The product insures complete system integrity by eliminating compromised thermal performance at all hanger and support locations. The CoolDry™ Heavy Duty Insulated Saddle is ideal for use in schools, hospitals, offices, hotels, food plants, breweries, and pharmaceutical plant.

## Technical Data – 25/50 Flame-Smoke Rated Phenolic Foam Pipe Insulation

| Physical Property  | 3.75 PCF   | 5.0 PCF  | Specification Compliance                                 |
|--|--|--|--|
| <b>Recommended Pipe Sizes</b>  | To 10" IPS                                       | 11" – 30" IPS                                    | Manufacturer Design Limits                               |
| <b>Thermal Conductivity</b><br>@75°F   | 0.17 Btu-in./hr-ft <sup>2</sup> ·°F              | .20 Btu-in./hr-ft <sup>2</sup> ·°F               | ASTM C-518   |
| <b>Temperature Limits</b>  | -290°F - 250°F                                   | -290°F - 250°F                                   |  |
| <b>Compressive Strength</b><br>Parallel to rise, min<br>Perpendicular to rise, min | 50 lb./in <sup>2</sup><br>40 lb./in <sup>2</sup> | 90 lb./in <sup>2</sup><br>70 lb./in <sup>2</sup> | ASTM D-1621<br>ASTM D-1621                               |
| <b>Water Absorption</b><br>Max % by Volume   | ≤ 2,5  | ≤ 2,5  | ASTM C-209   |
| <b>Water Vapor Permeability</b>  | ≤ 4 perm-inch                                    | ≤ 4 perm-inch                                    | ASTM E-96  |
| <b>Closed Cell Content</b>   | min. 95%   | min. 95%   | ASTM D-2856  |
| <b>Flame spread / Smoke developed</b><br>Up to 4 inches                            | ≤ 25/50  | ≤ 25/50  | ASTM E-84  |
| <b>Saddle, Galv. Carbon Steel</b><br>Thickness                                     | Hot Dipped G-90<br>12 gauge                      | Hot Dipped G-90<br>12 gauge                      | ASTM A-653 (Replaces A527)<br>ASTM A-653 (Replaces A527) |

### Product Dimensions

| Nominal Pipe Size | Insulation Length | Saddle Length | Plate Length | Saddle Gauge |
|-------------------|-------------------|---------------|--------------|--------------|
| 3"– 5"            | 18"               | 12"           | N/A          | 12 Ga.       |
| 6"– 10"           | 18"               | 14"           | 8"           | 12 Ga.       |
| 12"– 18"          | 18"               | 14"           | 12"          | 12 Ga.       |
| 20"– 24"          | 18"               | 14"           | 12"          | 12 Ga.       |