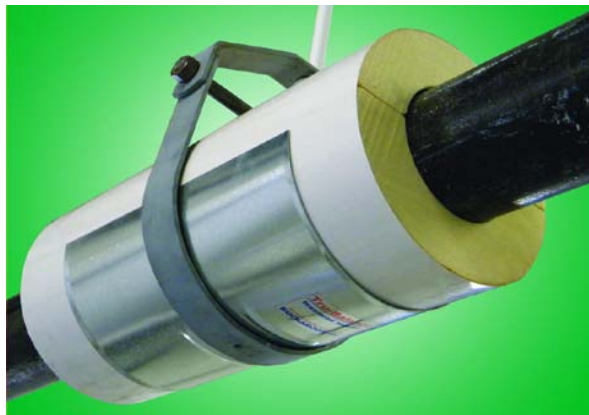




Tru-Balance 3300E Insulated Saddles



Description

The Tru-Balance Model 3300E insulated saddle is the most complete pre-insulated saddle system in the industry today for commercial piping systems to 300° F. The 3300E consists of a rigid 3 PCF polyisocyanurate insulation and a superior vapor retardant facing which contain no known nutrients that promote mold or fungus problems. The 3300E also features a Flared Edge Short-Rib Saddle for perfect placement inside the clevis hanger, along with a premium grade self-seal tape that secures and seals the facing in place. **Meets MSS SP-58, 9.2.2 for Type 40 Shields.**

Guide Specifications

Wherever pipe insulation passes through a hanger location, Tru-Balance 3300E water resistant insulated saddles shall be installed at the hanger locations for all piping operating to +300° F.

Features and Benefits

- Rigid 3 PCF insulation and superior vapor retarder contains no known nutrients that contribute to mold or fungus problems.
- Good for all piping systems to 300° F., so one product fits all.
- Rigid 3 PCF insulation can withstand the weight of commercial piping.
- Superior 6 mil. vapor retarder film meets a .01 perm rating, making the 3300E ideal for chilled water or cold piping systems.
- Completely assembled for fast jobsite application.
- A lock-joint to reduce heat gain/loss along the longitudinal seams to save energy.*

Applications

Ideal for indoor use on plumbing, heating, chilled water and refrigeration piping from -297° to 300° F. Because of the insulation's excellent thermal performance and low perm rated vapor retarder, it is the perfect choice for cold piping systems at hanger locations, where most failures are known to occur.

Technical Data

**The lock-joint feature is not available on all sizes.*

Physical Property	Value/Unit	Specification Compliance
Insulation Density	3.0 Lbs./Cu. Ft.	ASTM D-1622
Thermal Conductivity	19 BTU in./hr. ft./sq. °F	ASTM C-518
Service Temperature	-297°F to +300°F	Manufacturer Design Limits
Compressive Resistance	50 P.S.I.	ASTM D-1621
Water Absorption		
Max % by volume	.6%	ASTM C-272
Shrinkage, Max %	1%	ASTM D-2126
Vapor Retarder Film		
Thickness Average	6 Mil	ASTM D-374
Perm Rating	.010	ASTM E-96 – 93 UBC

Product Dimensions

Nominal Pipe Size	Insulation Length	Saddle Length	Saddle Gauge
1/2" – 1 1/2"	9"	6"	22 Ga.
2" – 5"	18"	12"	18 Ga.
6" – 10"	18"	14"	16 Ga.
12" – 18"	18"	14"	14 Ga.
20" – 24"	18"	14"	12 Ga.



Providing Performance, Quality, Value & Design
Only from Buckaroos, Inc.
The Leader in Pipe Insulation Support Systems Since 1990